

AIR PRESSURE REGULATOR Stainless Steel

SHAVO
FIRST NAME IN PNEUMATICS

SR77 (G 1/8, G 1/4)

FEATURES

- I 'Shavo's' Regulator Model SR77 is designed as a high-performance product for instrument air use in corrosive atmospheres.
 - I Applications include marine environments, oil and gas production, chemicals and food processing, medical analysis etc.
 - I CE, EAC [CUTR 10 (equivalent to GOST R & K) approved.
- SIL3 capable as per IEC 61508
- External Metallic parts meet NACE standard MR-01 75*

(*National Association of Corrosion Engineers MR-0175 defines requirements for sulphide stress cracking resistant materials used in oilwells and other



PARAMETERS	SPECIFICATIONS
Fluid	Compressed Air
Pipe Sizes	1/8", 1/4"
Port Thread	NPT - Standard BSPT, BSP Optional
Max. Inlet Pressure(Ambient)	435 psig (30 bar)
Operating Temp. Range	+80°C
Material of Construction : Body, Bonnet Internal parts External parts	Stainless Steel as per AISI 316L SS316L with NACE MR 0175 compliance SS316L SS316L with Nace MR 0175 compliance
Diaphragm Assembly	Synthetic Rubber without PTFE Protection
Elastomers	Low Temp.Nitrile LNBR) : -60° to 80°C EPDM : -35° to 80°C Fluorocarbon (Viton) : -20° to 80°C Nitrile (NBR) : -20° to 80°C
Standard nominal flow rate [At supply pressure of 150 psi (10.3) and 14.5 psi (1 bar) drop in sec. pressure of 87 psi (6bar)]	1/8" 17 scfm (8 dm³/sec) CV(0.32) 1/4" 20 scfm (9 dm³/sec) CV(0.38)
Type	Relieving - Standard Non-Relieving - Optional
Pressure Adjustment	Allen Head Adjusting Screw
Regulated Sec. Pr. Ranges	10-100 psi (0.70 to 7.0 bar) - Standard 1-10 psi (0.07 to 0.70 bar) - Optional 3-30 psi (0.21 to 2.10 bar) - Optional 5-50 psi (0.35 to 3.50 bar) - Optional 15.0-150 psi (1.0 to 10.0 bar) - Optional
Gauge Port (2 nos.)	1/4" BSPT (Fe) - Standard 1/4" NPT (Fe) - Optional
Gauge size (dial size)	40 mm (Nominal)
Mounting	P. M. NUT - Standard Wall Mounting Bracket - Optional
Weight	0.3 Kg

Pressure Gauge (scale) : Kg/cm² (PSI) - Standard (For Domestic Market)
Bar (PSI) - Standard (Export)

Note :

- 1) PM nut, mounting bracket, grub screw will not have the NACE MR 0175 approval.
- 2) Pressure gauge will not have CE, EAC, SIL3 and NACE MR 0175 approval.

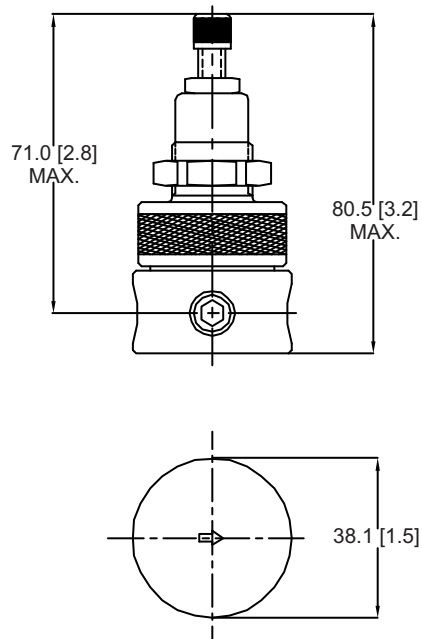
SR77 (G 1/8, G 1/4)

Option Selector

Sample Model Number → **S R 7 7 - 2 2 1 - R N K A - N - X X X - X X X**

Position → **0 1 2 3 - 4 5 6 - 7 8 9 10 - 11 - 12 13 14 - 15 16 17**

0		S = Shavo															
1	Product	R = Regulator															
2	3	Series	77 = Miniature with S.S. 316 (MOC)														
4	Port Size	1 = 1/8" 2 = 1/4"															
5	6	Options	<table><tr><td>BONNET MATERIAL</td><td></td><td>E</td></tr><tr><td></td><td>Low.Temp.Nitrile</td><td>E</td></tr><tr><td>Plastic</td><td>[25]</td><td></td></tr><tr><td>S.S.316</td><td>[75]</td><td></td></tr></table>	BONNET MATERIAL		E		Low.Temp.Nitrile	E	Plastic	[25]		S.S.316	[75]			
BONNET MATERIAL		E															
	Low.Temp.Nitrile	E															
Plastic	[25]																
S.S.316	[75]																
7	Function	R = Relieving N = Non-Relieving															
8	Pr. Gauge	N = No Gauge G = With SS Gauge[40mm] (without any certification)															
9	Sec. Pr. Range	A = 1-10 psi (0.07-0.7 bar) C = 3-30 psi (0.21-2.1 bar) E = 5-50 psi (0.35 - 3.5 bar) K = 10-100 psi (0.70 - 7.0 bar) M = 15-150 psi (1.0 - 10.0 bar)															
10	Port Thread	<table><tr><td></td><td>Main Port</td><td>Gauge Port</td></tr><tr><td>A</td><td>NPT</td><td>BSPT</td></tr><tr><td>B</td><td>BSPT</td><td>BSPT</td></tr><tr><td>C</td><td>BSP</td><td>BSPT</td></tr><tr><td>N</td><td>NPT</td><td>NPT</td></tr></table>		Main Port	Gauge Port	A	NPT	BSPT	B	BSPT	BSPT	C	BSP	BSPT	N	NPT	NPT
	Main Port	Gauge Port															
A	NPT	BSPT															
B	BSPT	BSPT															
C	BSP	BSPT															
N	NPT	NPT															
11	Mounting	N = No Wall Mounting Bracket B = Wall Mounting Bracket Fitted [P] = 2" Pipe Mounting bracket															



SR77 (G 1/8, G 1/4)

12 13 14 Test / Approval

C	0	0	CE
C	0	1	UKCA
C	0	2	CE, UKCA
E	0	0	EAC
E	0	1	EAC, UKCA
S	0	0	SIL3
S	0	1	SIL3, UKCA
G	0	0	CE, EAC
G	0	1	CE, EAC, UKCA
H	0	0	CE, SIL3
H	0	1	CE, SIL3, UKCA
K	0	0	CE, EAC, SIL3
K	0	1	CE, EAC, SIL3, UKCA
X	X	X	Standard Units Without Any Certificatio / Approval
[O]	[0]	[0]	Other Customer Special Requirement if Any

15 16 17 Compliance

X	X	X	Standard Unit Without any Compliance
A	0	1	RoHS 3 Compliance
A	0	2	REACH Compliance
A	0	3	Copper Free (Only Applicable Aluminium Version)
A	0	4	RoHS3, REACH Compliance
A	0	5	RoHS3, REACH, Copper Free (Only Applicable for Aluminium Version)
A	0	6	RoHS3, Copper Free (Only Applicable for Aluminium Version)
A	0	7	REACH, Copper Free (Only Applicable for Aluminium Version)

Note : Panel Mounting Nut is Standard for all units.

Option shown in the [] bracket are special, Please contact Sales HQ/Manufacturing.