

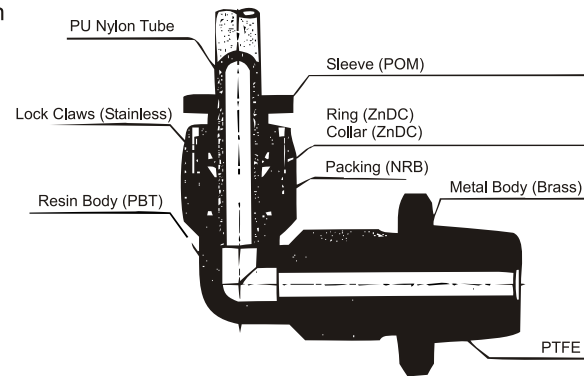
# PUSH-IN-FITTINGS

FIRST NAME IN PNEUMATICS

## FEATURES

- Quick installation, simple & flexible, space saving
- Wide variety of models to meet all your needs in pneumatic piping
- Even after installation tubing direction can be changed
- All taper pipe threads are pre-coated with teflon with fine seal performance

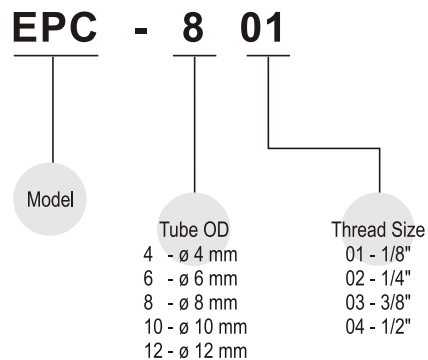
## STRUCTURAL CHART



## TECHNICAL SPECIFICATION

Fluid	-	Air, Vacuum
Pressure Range	-	0- 10.2 kg/cm <sup>2</sup> (0 to 1.0 Mpa)
Vacuum	-	100 kpa (10 ton)
Max Pressure	-	15.3 kgf/cm <sup>2</sup>
Temperature range	-	-20 to 60°C
Available Tube	-	P.U. (Polyurethane).

## OPTION SELECTOR



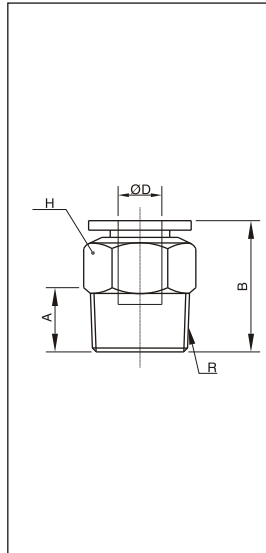
	Metric Size				
Code	4	6	8	10	12
Dia	ø4	ø6	ø8	ø10	ø12

	BSPT - Thread				
Code	01	02	03	04	06
Size	1/8	1/4	3/8	1/2	3/4

# PUSH-IN FITTINGS

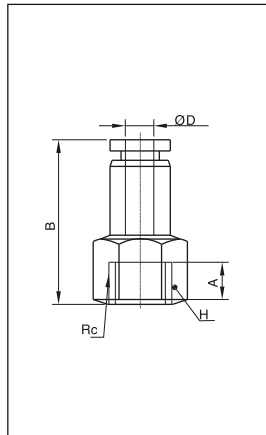
FIRST NAME IN PNEUMATICS

EPC Straight Connector



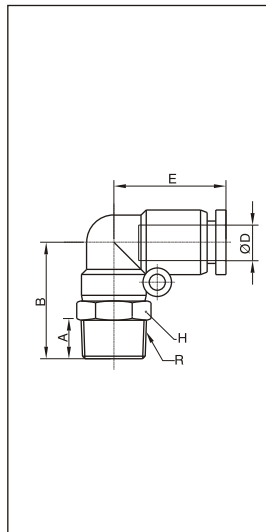
MODEL	D	R	A	B	H
EPC4-M5	4	M5	4	19.3	10
EPC4-01	4	R1/8	7.5	19.8	10
EPC4-02	4	R1/4	9.5	17.9	14
EPC6-M5	6	M5	4	20.7	12
EPC6-01	6	R1/8	7.5	21	12
EPC6-02	6	R1/4	9.5	22.7	14
EPC6-03	6	R3/8	10.5	20.7	17
EPC6-04	6	R1/2	13.5	24.7	21
EPC8-01	8	R1/8	7.5	25.9	14
EPC8-02	8	R1/4	9.5	24.9	14
EPC8-03	8	R3/8	10.5	21.9	17
EPC8-04	8	R1/2	13.5	25.9	21
EPC10-01	10	R1/8	7.5	29.5	17
EPC10-02	10	R1/4	9.5	30.8	17
EPC10-03	10	R3/8	10.5	28.3	17
EPC10-04	10	R1/2	13.5	26.6	21
EPC12-01	12	R1/8	7.5	31.6	21
EPC12-02	12	R1/4	9.5	33.6	21
EPC12-03	12	R3/8	10.5	30.6	21
EPC12-04	12	R1/2	13.5	33.6	21

EPCF Female Straight



MODEL	øD	Rc	A	B	H
EPCF4-01	4	Rc1/8	8	23.3	14
EPCF4-02	4	Rc1/4	11	26.3	17
EPCF6-01	6	Rc1/8	8	24.4	14
EPCF6-02	6	Rc1/4	11	27.4	17
EPCF6-03	6	Rc3/8	12	28.4	21
EPCF6-04	6	Rc1/2	14	30.4	24
EPCF8-01	8	Rc1/8	8	25.9	14
EPCF8-02	8	Rc1/4	11	28.9	17
EPCF8-03	8	Rc3/8	12	29.9	21
EPCF8-04	8	Rc1/2	14	31.9	24
EPCF10-01	10	Rc1/8	8	29	17
EPCF10-02	10	Rc1/4	11	32	17
EPCF10-03	10	Rc3/8	12	33	21
EPCF10-04	10	Rc1/2	14	35	24
EPCF12-02	12	Rc1/4	11	33.9	21
EPCF12-03	12	Rc3/8	12	34.9	21
EPCF12-04	12	Rc1/2	14	36.9	24

EPL Male Elbow

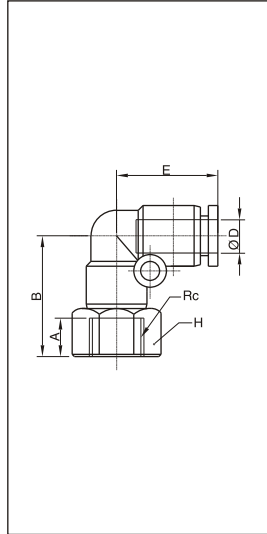


MODEL	øD	R	A	B	E	H
EPL4-M5	4	M5	4	17	17.5	10
EPL4-01	4	R1/8	7.5	24	17.5	10
EPL4-02	4	R1/4	9.5	27	17.5	14
EPL6-M5	6	M5	4	17.5	19	12
EPL6-01	6	R1/8	7.5	25.7	19	12
EPL6-02	6	R1/4	9.5	28.2	19	14
EPL6-03	6	R3/8	10.5	29.7	19	17
EPL6-04	6	R1/2	13.5	33.2	19	21
EPL8-01	8	R1/8	7.5	29.5	22.8	14
EPL8-02	8	R1/4	9.5	31.5	22.8	14
EPL8-03	8	R3/8	10.5	33	22.8	17
EPL8-04	8	R1/2	13.5	36.5	22.8	21
EPL10-01	10	R1/8	7.5	34.3	27.6	17
EPL10-02	10	R1/4	9.5	36.3	27.6	17
EPL10-03	10	R3/8	10.5	37.3	27.6	17
EPL10-04	10	R1/2	13.5	40.8	27.6	21
EPL12-02	12	R1/4	9.5	38.5	29.6	21
EPL12-03	12	R3/8	10.5	39.5	29.6	21
EPL12-04	12	R1/2	13.5	42.5	29.6	21

# PUSH-IN FITTINGS

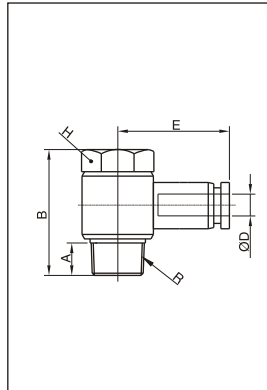
FIRST NAME IN PNEUMATICS

EPLF Female Elbow



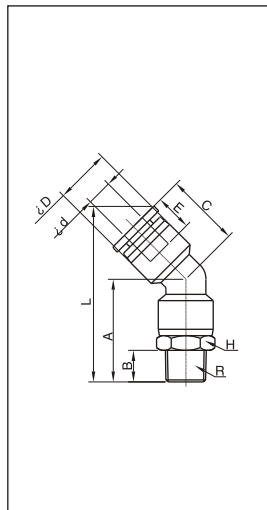
MODEL	øD	R	A	B	E	H		
EPLF4-M5	4	M5	5.5	18.5	17.5	10		
EPLF4-01	4	Rc1/8	8	23	17.5	14		
EPLF4-02	4	Rc1/4	11	26	17.5	17		
EPLF6-M5	6	M5	5	19.7	19	12		
EPLF6-01	6	Rc1/8	8	39.1	19	14		
EPLF6-02	6	Rc1/4	11	27.4	19	17		
EPLF6-03	6	Rc3/8	12	28.7	19	21		
EPLF6-04	6	Rc1/2	14	30.9	19	24		
EPLF8-01	8	Rc1/8	8	27.3	22.8	14		
EPLF8-02	8	Rc1/4	11	30.3	22.8	17		
EPLF8-03	8	Rc3/8	12	32	22.8	21		
EPLF8-04	8	Rc1/2	14	34.3	22.8	24		
EPLF10-01	10	Rc1/8	8	27.3	29.9	17		
EPLF10-02	10	Rc1/4	11	34.3	29.9	17		
EPLF10-03	10	Rc3/8	12	36.3	29.9	21		
EPLF10-04	10	Rc1/2	14	38.8	29.9	24		
EPLF12-02	12	Rc1/4	11	37	29.6	21		
EPLF12-03	12	Rc3/8	12	38	29.6	21		
EPLF12-04	12	Rc1/2	14	40.5	29.6	24		

EPH Universal Elbow



MODEL	øD	R	A	B	H	E
EPH4-M5	4	M5	3.8	17	8	20
EPH4-01	4	R1/8	7.5	23.5	10	22.3
EPH6-M5	6	M5	3.8	17	8	21.9
EPH6-01	6	R1/8	7.5	23.5	10	23.1
EPH6-02	6	R1/4	9.5	26.3	14	25.1
EPH6-03	6	R3/8	10.5	31.9	19	26.8
EPH8-01	8	R1/8	7.5	23.5	10	25.6
EPH8-02	8	R1/4	9.5	26.3	14	28.6
EPH8-03	8	R3/8	10.5	31.9	19	29.6
EPH8-04	8	R1/2	13.5	38.6	24	32.6
EPH10-02	10	R1/4	9.5	26.3	14	32.3
EPH10-03	10	R3/8	10.5	31.9	14	32.9
EPH10-04	10	R1/2	13.5	38.6	19	35.9
EPH12-03	12	R3/8	10.5	31.9	14	35.6
EPH12-04	12	R1/2	13.5	38.6	19	36.6

EPLH 45° Elbow

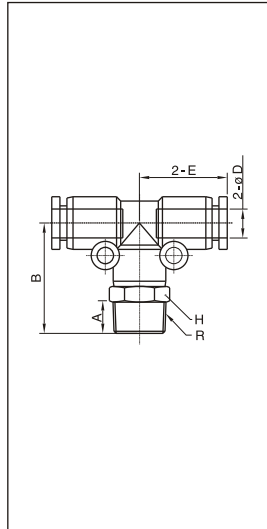


MODEL	L	A	B	C	E	øD	ød	H	R
EPLH4-M5	34.7	22	4	16.4	15.1	11	4	10	M5
EPLH4-01	38.5	22.7	7.5	16.4	15.1	11	4	10	R1/8
EPLH4-02	41.5	25.7	9.5	16.4	15.1	11	4	14	R1/4
EPLH6-M5	36.1	21.9	4	18	16	13	6	12	M5
EPLH6-01	42	24.4	7.5	18	16	13	6	12	R1/8
EPLH6-02	44.5	26.9	9.5	18	16	13	6	14	R1/4
EPLH6-03	46	28.4	10.5	18	16	13	6	17	R3/8
EPLH6-04	49.5	31.9	13.5	18	16	13	6	21	R1/2
EPLH8-01	48	27.6	7.5	20.9	18.1	14.8	8	14	R1/8
EPLH8-02	50	29.6	9.5	20.9	18.1	14.8	8	14	R1/4
EPLH8-03	51.5	31.1	10.5	20.9	18.1	14.8	8	17	R3/8
EPLH8-04	55	34.6	13.5	20.9	18.1	14.8	8	21	R1/2
EPLH10-01	53.6	30.2	7.5	23.5	20.4	18.4	10	17	R1/8
EPLH10-02	55.6	32.2	9.5	23.5	20.4	18.4	10	17	R1/4
EPLH10-03	56.6	33.2	10.5	23.5	20.4	18.4	10	17	R3/8
EPLH10-04	60.1	36.7	13.5	23.5	20.4	18.4	10	21	R1/2
EPLH12-01	59.9	33.2	7.5	26.3	23.2	21	12	21	R1/8
EPLH12-02	61.9	35.2	9.5	26.3	23.2	21	12	21	R1/4
EPLH12-03	62.9	36.2	10.5	26.3	23.2	21	12	21	R3/8
EPLH12-04	65.9	39.2	13.5	26.3	23.2	21	12	21	R1/2

# PUSH-IN FITTINGS

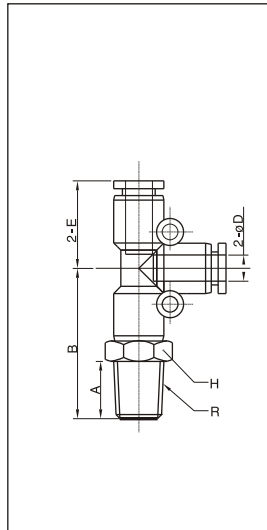
FIRST NAME IN PNEUMATICS

EPB Male Tee



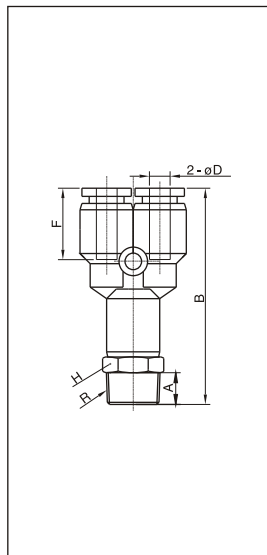
MODEL	øD	R	A	B	E	H			
EPB4-M5	4	M5	4	22.5	18.5	10			
EPB4-01	4	R1/8	7.5	25	18.5	10			
EPB4-02	4	R1/4	9.5	28	18.5	14			
EPB6-M5	6	M5	4	23.5	19.3	12			
EPB6-01	6	R1/8	7.5	26	19.3	12			
EPB6-02	6	R1/4	9.5	28.5	19.3	14			
EPB6-03	6	R3/8	10.5	30	19.3	17			
EPB6-04	6	R1/2	13.5	33.5	19.3	21			
EPB8-01	8	R1/8	7.5	29.45	22.75	14			
EPB8-02	8	R1/4	9.5	31.45	22.75	14			
EPB8-03	8	R3/8	10.5	32.95	22.75	17			
EPB8-04	8	R1/2	13.5	36.45	22.75	21			
EPB10-01	10	R1/8	7.5	35	28.3	17			
EPB10-02	10	R1/4	9.5	37	28.3	17			
EPB10-03	10	R3/8	10.5	38	28.3	17			
EPB10-04	10	R1/2	13.5	41.5	28.3	21			
EPB12-02	12	R1/4	9.5	38.5	29.6	21			
EPB12-03	12	R3/8	10.5	39.5	29.6	21			
EPB12-04	12	R1/4	13.5	42.5	29.6	21			

EPD Branch Tee



MODEL	øD	R	A	B	E	H			
EPD4-M5	4	M5	4	23	18.5	10			
EPD4-01	4	R1/8	7.5	25	18.5	10			
EPD4-02	4	R1/4	9.5	28	18.5	14			
EPD6-M5	6	M5	4	24	19.3	12			
EPD6-01	6	R1/8	7.5	26	19.3	12			
EPD6-02	6	R1/4	9.5	28.5	19.3	14			
EPD6-03	6	R3/8	10.5	30	19.3	17			
EPD6-04	6	R1/2	13.5	33.5	19.3	21			
EPD8-01	8	R1/8	7.5	29.45	22.75	14			
EPD8-02	8	R1/4	9.5	31.45	22.75	14			
EPD8-03	8	R3/8	10.5	32.95	22.75	17			
EPD8-04	8	R1/2	13.5	36.45	22.75	21			
EPD10-01	10	R1/8	7.5	35	28.3	17			
EPD10-02	10	R1/4	9.5	37	28.3	17			
EPD10-03	10	R3/8	10.5	38	28.3	17			
EPD10-04	10	R1/2	13.5	41.5	28.3	17			
EPD12-02	12	R1/4	9.5	38.5	29.6	21			
EPD12-03	12	R3/8	10.5	39.5	29.6	21			
EPD12-04	12	R1/2	13.5	42.5	29.6	21			

EPX Branch Y



MODEL	øD	R	A	B	F	H			
EPX4-M5	4	M5	4	35.5	14	10			
EPX4-01	4	R1/8	7.5	42	14	10			
EPX4-02	4	R1/4	9.5	45	14	14			
EPX6-M5	6	M5	4	37	14.8	12			
EPX6-01	6	R1/8	7.5	43.8	14.8	12			
EPX6-02	6	R1/4	9.5	46.3	14.8	14			
EPX6-03	6	R3/8	10.5	47.8	14.8	17			
EPX6-04	6	R1/2	13.5	51.3	14.8	21			
EPX8-01	8	R1/8	7.5	47.1	18.2	14			
EPX8-02	8	R1/4	9.5	49.1	18.2	14			
EPX8-03	8	R3/8	10.5	50.6	18.2	17			
EPX8-04	8	R1/2	13.5	54.1	18.2	21			
EPX10-01	10	R1/8	7.5	56.4	20.8	17			
EPX10-02	10	R1/4	9.5	58.4	20.8	17			
EPX10-03	10	R3/8	10.5	59.4	20.8	17			
EPX10-04	10	R1/2	13.5	62.9	20.8	21			
EPX12-01	12	R1/8	7.5	57.7	21	21			
EPX12-02	12	R1/4	9.5	60.7	21	21			
EPX12-03	12	R3/8	10.5	61.7	21	21			
EPX12-04	12	R1/2	13.5	65.7	21	24			