

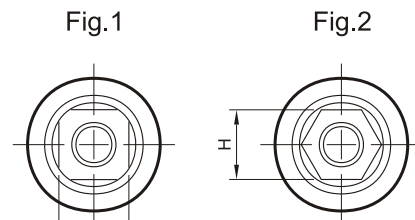
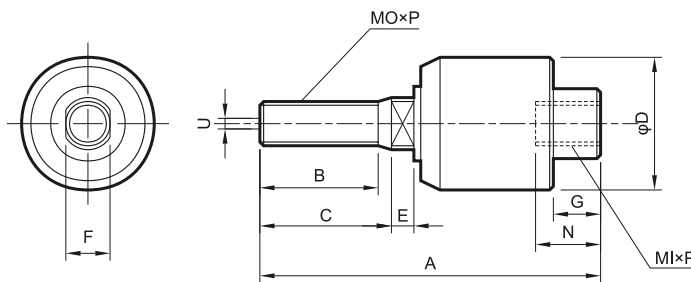
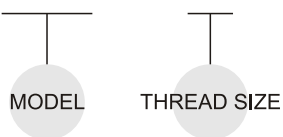
FEATURES

- Minor error connecting between two shafts can be removed.
- Machining accuracy can be neglected.
- Abnormal noise can be prohibited.
- Abnormal noise can be prohibited.
- Small in dimension but can be loaded high tension & compression.



OPTION SELECTOR

SFC—1004



Model	Cyl. dia	MI×P	MO×P	A	B	C	D	E	F	G	H	N	Permissible U deviation	Illustration fig no.
SFC	6	M3×0.5	M3×0.5	24.5	7	8	12	1.5	4	4	5.8	5	0.5	Fig.1
SFC	10	M4×0.7	M4×0.7	26	10	10	12	1.5	4	4	5	5	0.5	Fig.1
SFC	10, 15	M5×0.8	M5×0.8	37	12.5	15	18	3	6	5	10	7	0.5	Fig.1
SFC	15	M6×1.0	M6×1.0	37	12.5	15	18	3	6	5	10	7	0.5	Fig.1
SFC	20	M8×1.25	M8×1.25	50	18	20	24	4	8	7	13	8	0.5	Fig.1
SFC	25, 30	M10×1.25	M10×1.25	58	20	22	26	5	10	8	17	9	0.75	Fig.1
SFC	40	M12×1.25/1.5	M12×1.25/1.5	58	20	22	28	5	12	8	17	9	0.75	Fig.1
SFC	40	M14×1.5	M14×1.5	70	20	23	35	7	14	9	22	13	1	Fig.1
SFC	50, 63	M16×1.5	M16×1.5	90	25	28	45	9	17	13	27	15	1.25	Fig.1
SFC	50, 63	M18×1.5	M18×1.5	90	25	28	45	9	17	13	27	15	1.25	Fig.1
SFC	80	M20×1.5	M20×1.5	102	29	32	53	10	22	15	32	18	2	Fig.2
SFC	80	M22×1.5	M22×1.5	102	29	32	53	10	22	15	32	18	2	Fig.2
SFC	100	M24×1.5	M24×1.5	124	35	38	61	12	26	19	41	24	2.5	Fig.2
SFC	100	M26×1.5	M26×1.5	124	35	38	61	12	26	19	41	24	2.5	Fig.2
SFC	120, 130	M30×1.5	M30×1.5	156	53	61	63	18	30	24	40	25	-	Fig.2
SFC	140, 160	M36×1.5	M36×1.5	199	64	72	75	18	36	24	48	46	-	Fig.2
SFC	200	M45×1.5	M45×1.5	215	90	94	85	12	-	35	65	45	-	Fig.2

※Permissible pressure range: pneumatic pressure must below 10kgf/cm², hydraulic pressure must below 35kgf/cm².