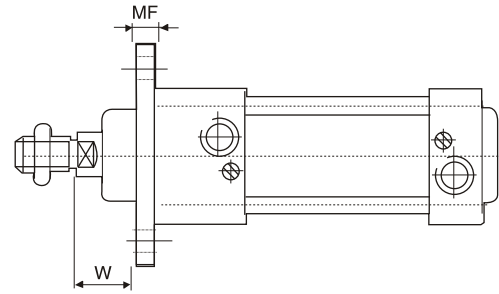
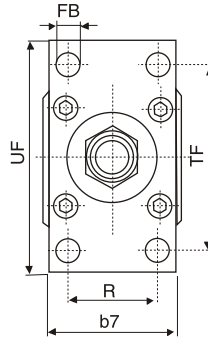


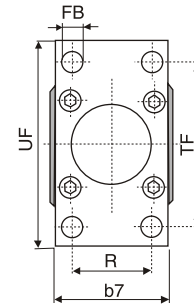
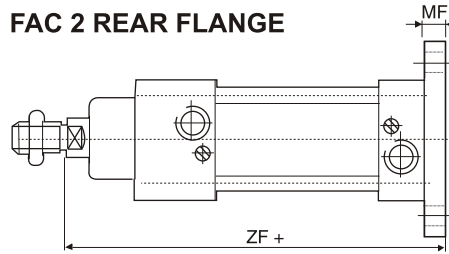
### 1. FAC 1 / FAC 2

#### FAC 1 FRONT FLANGE



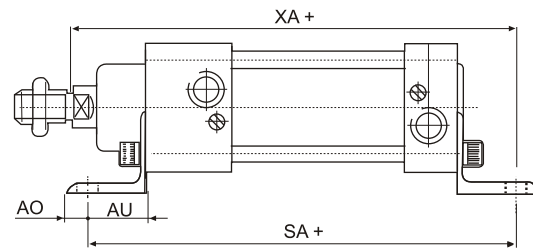
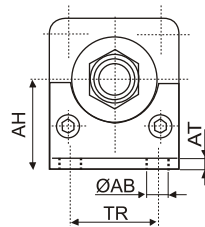
Ø	FB H13	MF	R JS14	TF JS14	UF max.	ZF	b7 max.
32	7	10	32	64	80	131	50
40	9	10	36	72	90	146	54
50	9	12	45	90	110	156	65
63	9	12	50	100	120	171	75
80	12	15	63	126	150	190	100
100	14	15	75	150	172	205	120
125	16	20	90	180	220	245	140
160	18	20	115	230	275	280	175

#### FAC 2 REAR FLANGE



### 2. LB

#### LB - PEDESTAL (2 Nos.)

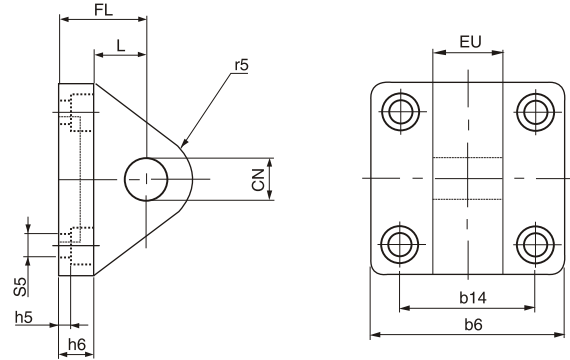


Ø	AB H13	AH ±0,5	AO	AT	AU	SA	TR ±0,3	XA
32	7	32	6	4	24	143	32	145
40	9	36	7	5	28	162	36	164
50	9	45	8	6	32	171	45	176
63	9	50	8	6	32	186	50	191
80	12	63	14	6	41	211	63	216
100	14	71	14	6	41	222	75	231
125	16	90	20	8	45	253	90	272
160	18	115	20	10	60	302	115	323

### 3. CA



**CA - MALE HINGE REAR**

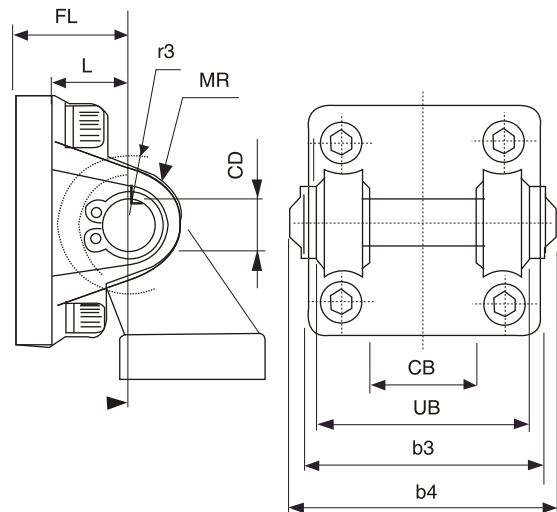


∅	FL	L	EU	CN	h6	S5	h5	r5	b14	b6
32	22	12,0	25,0	10	8	6	2,7	10	32,5	50
40	25	14,0	27,0	12	8,7	7	2,7	10	38	55
50	27	15,0	31	12	12	9	5,3	13	46,5	65
63	32	19,0	39	16	12	9	5,3	15	56,5	77
80	36	22	49	16	14	10	5,1	15	72	95
100	41	24	59	20	15	10	6,1	19	89	110
125	50	29	70	25	20	13	9	22	110	135
160	55	34	90	32	25	17	12	31	140	180

### 4. CB



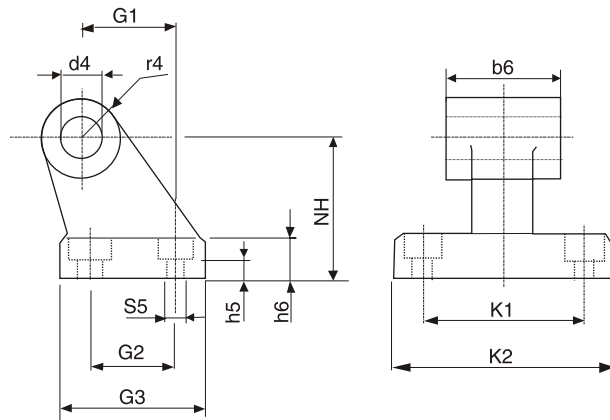
**CB - FEMALE HINGE REAR**



∅	CB	CD	FL	L	MR	UB	XD	b3	b4	r3
	D10	h9			max.	d12		max.	max.	max.
32	26	10	22	13	11	45	143	50	52	12
40	28	12	25	15	13	52	161	56	60	15
50	32	12	27	16	13	60	171	66	68	15
63	40	16	32	20	17	70	191	78	79	20
80	50	16	36	23	17	90	211	96	99	20
100	60	20	41	25	22	110	231	114	120	25
125	70	25	50	30	26	130	277	140	140	26
160	90	30	55	35	31	170	318	180	205	31

### 5. CDB

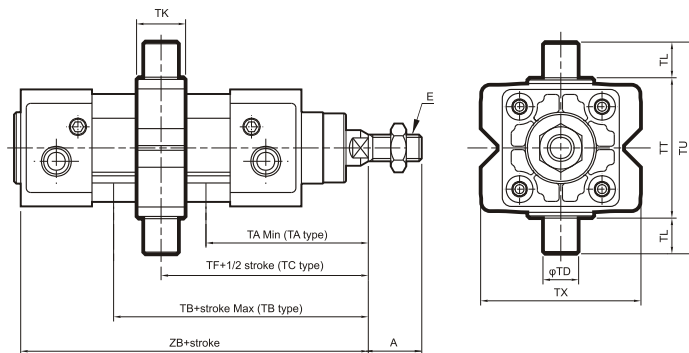
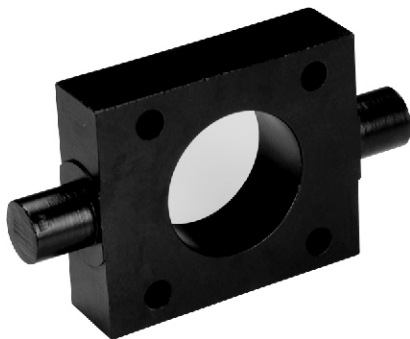
#### CDB - COUNTER HINGE FOR CB



Ø	G1	G2	G3	K1	K2	NH	S5	b6	d4	h5	h6	r5
	JS14	JS14	max.	JS14	max.	JS15	H13	0/-0,4	H9		max.	max.
32	21	18	31	38	51	32	5,5	25,8	10	2,3	8	10
40	24	22	35	41	54	36	5,5	27,8	12	4,3	10	11
50	33	30	45	50	65	45	6,6	31,8	12	5,2	12	13
63	37	35	50	52	67	50	6,6	39,8	16	5,2	12	15
80	47	40	60	66	86	63	9	49,8	16	5	14	15
100	55	50	70	76	96	71	9	59,8	20	6	15	19
125	70	60	90	94	124	90	11	70	25	18	20	22,5
160	97	88	126	118	156	115	14	90	30	23	25	31

### 6. TC

#### TC - CENTRAL TRUNNION (2 Nos.)

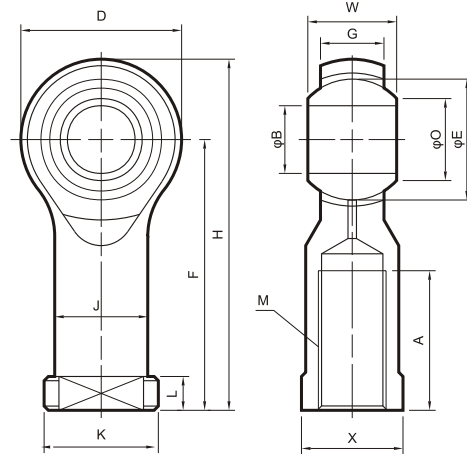


Code Tube I.D.	A	E	TA	without magnet		magnet		TD	TF	TK	TL	TT	TU	TX
				TB	ZB	TB	ZB							
32	22	M10×1.25	73	73	120	103	150	12 <sup>es</sup>	73	22	12	50	74	58
40	24	M12×1.25	77	88	135	118	165	16 <sup>es</sup>	82.5	28	16	63	95	70
50	32	M16×1.5	86	94	143	124	173	16 <sup>es</sup>	90	32	16	75	107	85
63	32	M16×1.5	89.5	105.5	158	135.5	188	20 <sup>es</sup>	97.5	35	20	90	130	100
80	40	M20×1.5	107	113	174	153	214	20 <sup>es</sup>	110	40	20	110	150	120
100	40	M20×1.5	116.5	123.5	189	163.5	229	25 <sup>es</sup>	120	45	25	132	182	145

### 7. CDB



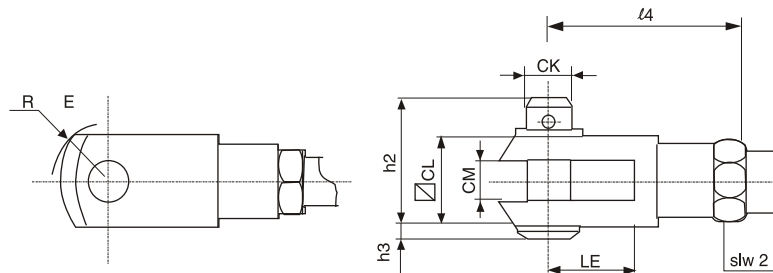
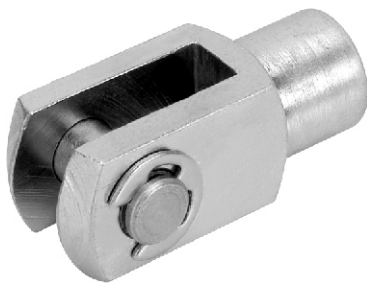
SHS - ROD EYE



Model	Main dimensions (mm)														Static fracture minimal radial load (kgf)	Dynamic eff. load (kgf)		Weight (g)
	A	B	D	E	F	G	H	J	K	L	M	O	W	X		Radial	Axial	
-(M5×0.8)	14	5	16	11.11	27	7	35	9	12	4	M5×0.8	7.71	8	9	930	620	230	18
-(M6×1.0)	14	6	18	12.7	30	7	39	10	13	5	M6×1.0	8.96	9	11	1040	690	270	26
-(M8×1.25)	17	8	22	15.875	36	9	47	12.5	16	5	M8×1.25	10.4	12	14	1490	990	430	45
-(M10×1.25)	21	10	26	19.05	43	11	56	15	19	6.5	M10×1.25	12.92	14	17	2010	1340	630	76
-(M12×1.25)	24	12	30	22.225	50	12	65	17.5	22	6.5	M12×1.25	15.43	16	19	2470	1650	800	114
-(M14×1.5)	27	14	34	25.4	57	14	74	20	25	8	M14×1.5	16.86	19	22	3130	2090	1070	158
-(M16×1.5)	33	16	38	28.575	64	15	83	22	27	8	M16×1.5	19.39	21	22	3700	2470	1290	200
-(M18×1.5)	36	18	42	31.75	71	17	92	25	31	10	M18×1.5	21.89	23	27	4490	2990	1620	288
-(M20×1.5)	40	20	46	34.925	77	18	100	27.5	37	10	M20×1.5	24.38	25	32	5180	3460	1890	372
-(M22×1.5)	43	22	50	38.1	84	20	109	30	37	12	M22×1.5	25.84	28	32	6100	4070	2290	475
-(M24×1.5)	48	25	56	42.862	94	22	122	33.5	42	12	M24×1.5	29.6	31	36	7420	4950	2830	673
-(M30×2.0)	56	30	67	50.8	110	26	143.5	40	50	15	M30×2.0	34.81	37	41	11000	7370	3960	1050

### 8. YSB

Y - FORK + PIN



∅	CK h11	CL	CM +0,15 +0,5	ER max.	LE min.	h2	h3	l4 min. max.	slw2
32	10	20	10	13	20	28	2	48 - 52	18
40	12	24	12	17	24	35	3	58 - 61	21
50	16	32	16	21	32	45	3	77 - 80	27
63	16	32	16	21	32	45	3	77 - 80	27
80	20	40	20	27	40	55	4	96 - 100	33
100	20	40	20	27	40	55	4	96 - 100	33
125	30	55	28	38	56	72	5	133 - 138	41
160	35	70	36	46	72	87	6	170 - 178	55